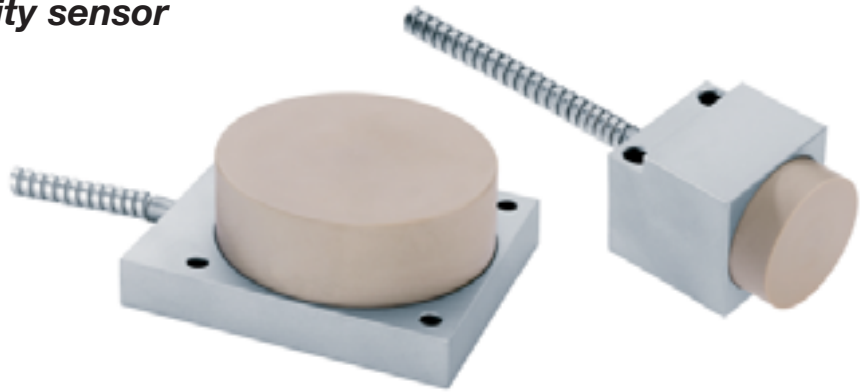


## High temperature 250 °C

### Series IRH / IDH - Proximity sensor

Armoured cable

With connector for cable amplifier



| Design   | Cuboid 40 mm                                 | Ø 80 mm           | DC PNP • M30x1.5 |
|--|--|-------------------|------------------|
| Dimensions   |  |                   |                  |
| Installation<br>non flush (nf)   |  |                   |                  |
| Operating distance sn [mm]<br>Switching output PNP                           | 20 nf, adjustable                            | 40 nf, adjustable | amplifier<br>    |
| ID-No.   | P31294                                       | P31295            | P31204           |
| Type   | IRH 040 S250                                 | IDH 080 S250      | IK 030 GSP       |
| Supply voltage [V]   | -  | -                 | 10...30          |
| Switching current [mA]   | -  | -                 | 200              |
| Current consumption [mA]   | -  | -                 | 15               |
| Voltage drop [V]   | -  | -                 | 1.5              |
| Ambient temperature [°C]   | 0...+250                                     |                   | 0...+70          |
| Short circuit proof  | -  | -                 | •                |
| Reverse protection   | -  | -                 | •                |
| EMC-class  | A  | A                 | A                |
| Switching frequency [Hz]   | 30   | 30                | 30               |
| Protection [EN 60529]  | IP 60  |                   | IP 67            |
| Function indicator   | -  | -                 | LED yellow       |
| Stand-by indicator   | -  | -                 | LED green        |
| Housing material   | Aluminium / PEEK                             |                   | AISI 316 Ti      |
| Connection cable   | 5 m FEP-cable, Ø 8 mm<br>armoured cable      |                   | -                |
| Connection   | M12 connector                                |                   | M12 connector    |
| Temperature depending<br>parameters are described in<br>the technical manual |  |                   |                  |
| Accessories  | connecting cable SLG 3-2 (Z01076), page 3.61 |                   |                  |

